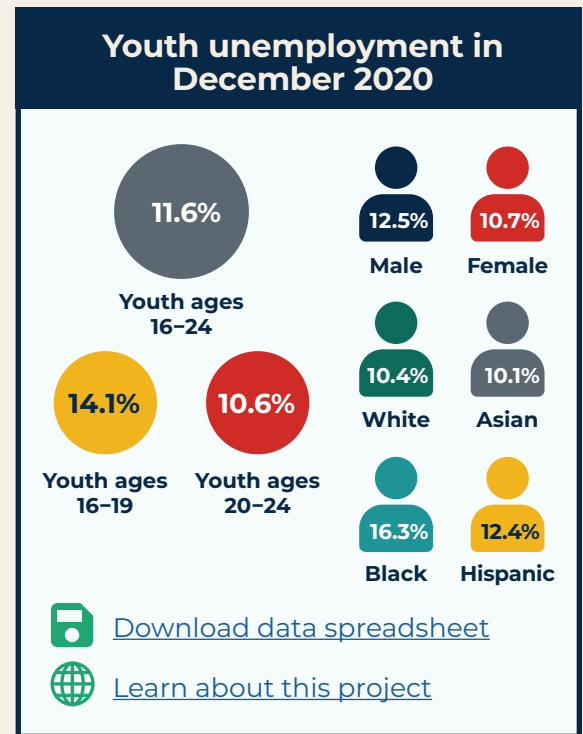


# COVID-19 and Youth Unemployment in 2020, by Gender and Race

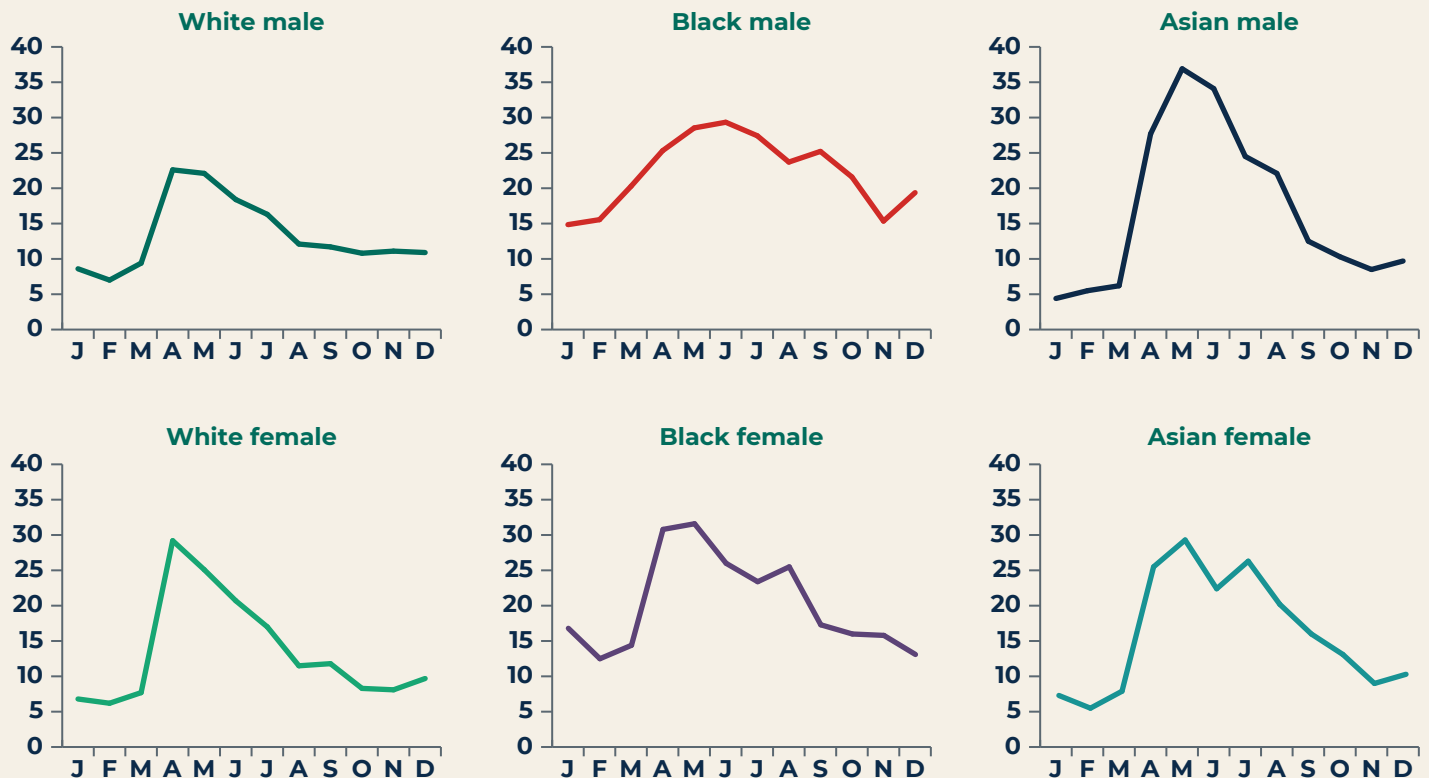
In 2020, COVID-19 had a dramatic effect on employment opportunities for youth. After the pandemic hit the economy, unemployment spiked in April and May among all youth subgroups.

Among White youth and Asian male youth, unemployment steadily declined from the spring to the fall, leveling off in the winter slightly above the pre-pandemic unemployment level.

However, for Black male and female youth as well as for Asian female youth, unemployment stayed alarmingly high until the fall.



## Monthly youth unemployment rates in 2020, by gender and race (%)



Source: Mathematica compilation based on the Bureau of Labor Statistics' monthly Labor Force Statistics from the Current Population Survey (<https://www.bls.gov/cps/data.htm>).